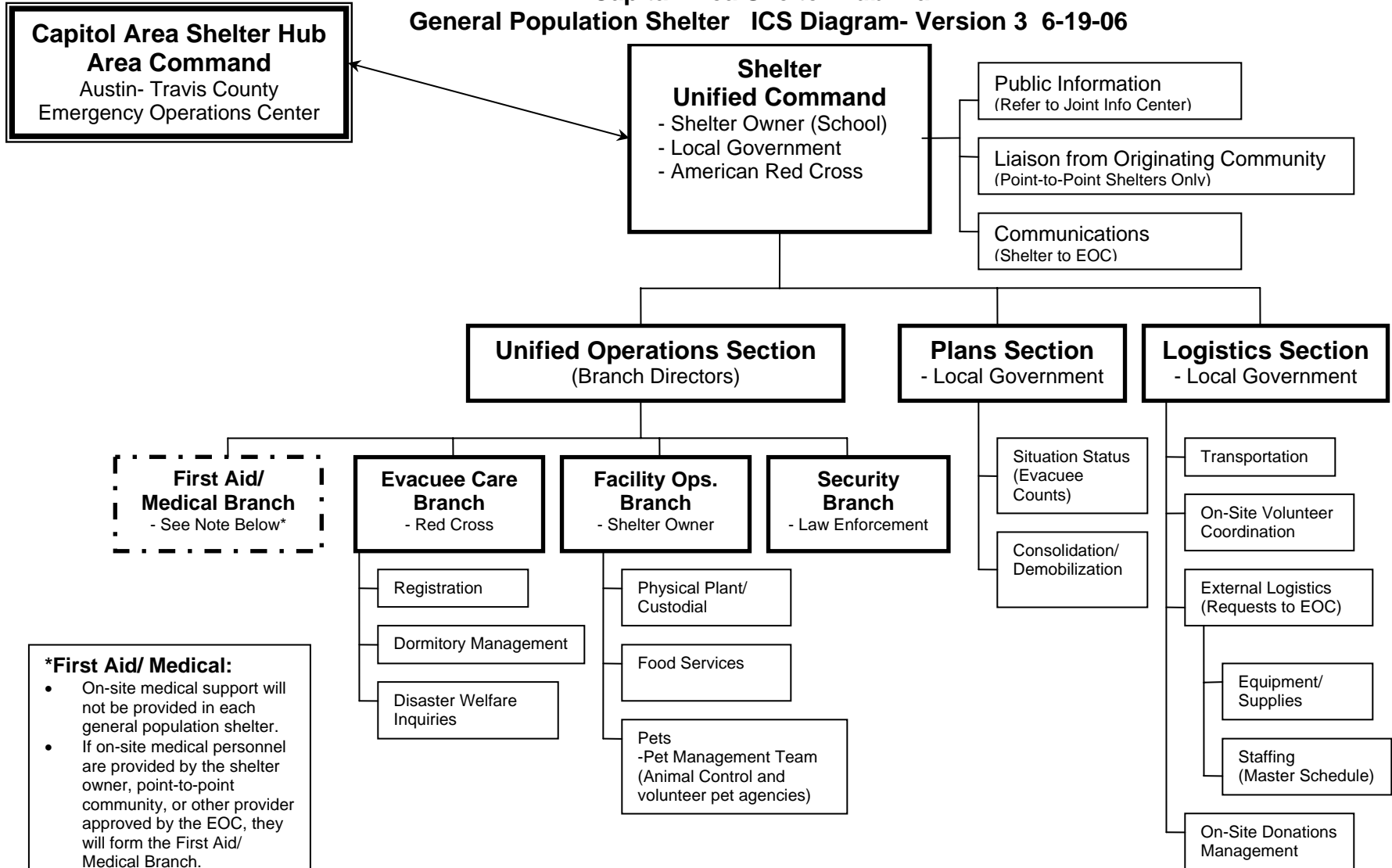


**Capital Area Shelter Hub Plan
General Population Shelter ICS Diagram- Version 3 6-19-06**



***First Aid/ Medical:**

- On-site medical support will not be provided in each general population shelter.
- If on-site medical personnel are provided by the shelter owner, point-to-point community, or other provider approved by the EOC, they will form the First Aid/ Medical Branch.
- An Evacuee Medical Information Line (phone) will be provided for evacuee use.
- A Shelter Management Medical Support Hotline (phone) will be provided for use by Unified Command in each shelter.
- In case of emergency, call 9-1-1.

Notes:

- All Command Staff must complete Capital Area Shelter Hub Shelter Management Training.
- Agencies in the diagram show the organization that will normally fill each position. Command Staff (Facility Owner, Local Government, and Red Cross) should be prepared to fill any Command, Branch Director, or Section Chief position if needed.
- Section Chief and Branch Director positions are required for minimum staffing of the shelter.
 - These persons may also serve as Unified Commanders.
 - Plans and Logistics may be staffed by the same person.
 - Functions below the Section Chief/ Branch Director may be filled by the Chief/ Director or by other available staff.
- Shelter staff will be assigned to Sections/ Branches by Unified Command based on availability and incident needs.
- The Plans Section shall complete incident command diagrams showing names and positions for each work-shift or operational period.